

# RIO DE JANEIRO METRO

## THE NETWORK HUB OF THE CITY

Equinix data centers located in Rio de Janeiro are some of Brazil's leading carrier-neutral data centers. They are the network hub of the city and home to 495+ companies. Customers can choose from a dense concentration of top global networks and enterprise service providers while interconnecting directly to customers and partners

Additionally, customers in RJ1 and RJ2 can interconnect directly with each other as well as other companies collocated in Equinix's São Paulo facilities.



### Rio de Janeiro metro facilities

The Equinix Rio de Janeiro metro International Business Exchange™ (IBX®) data centers consists of two buildings with 4,225+ meters squared (45,000+ feet squared) of colocation space. They are compliant with ISO 9001:2008 to meet quality management system standards, ISO 27001 for information security management, SSAE 16 / ISAE3402 SOC1 Type I, an international auditing standard for service provider locations, and PCI DSS.

### Equinix value by vertical

#### For network service providers

- Direct connect to 70+ network service providers
- Two interconnected sites with high availability infrastructure
- Ability to host data center containers in RJ2

#### For enterprises

- Access a variety of cloud and IT services providers via Equinix Marketplace™
- Access to Brazilian Managed Services portfolio and premium colocation in compliance with Equinix Global SLA

#### For cloud and IT services providers

- Ability to interconnect directly to 495+ companies collocated with Equinix in Rio de Janeiro
- Ability to reach São Paulo's market through Inter Metro Connect
- Potential for big data companies to bring analytics to the oil and gas industry



Equinix RJ2 IBX exterior

#### For content and digital media

- Premium colocation with network density provides low latency content delivery to end users
- Reach retail ISPs in Rio's Partner-IX (IX.br) and Equinix facilities via Cross Connect
- Direct access to top content delivery networks like CDNetworks, Highwinds and Incapsula

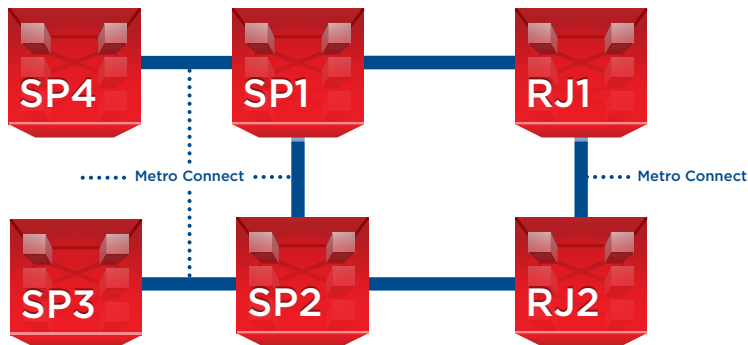
#### For financial services

- Low latency connectivity to CNSeg and CETIP
- Get fastest access to São Paulo's financial ecosystem through Inter Metro Connect
- Ability to lease Equinix Business Contingency Room/Seats



Equinix RJ1 security and maintenance

## Connectivity options through Equinix



## Reasons to believe in us

### Global data centers

- 200 data centers, 52 major markets, \$21B+ capital invested in capacity/new markets, global availability 99.9999%+

### Connected

- 1,700+ networks, 270,000+ cross connects, less than 10ms latency to 90% of the population of North America, Western Europe, top markets in Asia-Pacific and Brazil

### Partners, customers and prospects

- Blue-chip customer base of 9,800+ global businesses across 24 countries, on 5 continents representing network, digital media, financial services, cloud/IT and enterprise leaders

## Equinix customer count per vertical



**70+**  
Network



**220+**  
Enterprise



**45+**  
Financial Services



**25+**  
Content and Digital Media



**130+**  
Cloud and IT Services

### Contact Us

Phone: +55 (21) 3083-3333

Web: [www.equinix.com.br](http://www.equinix.com.br)