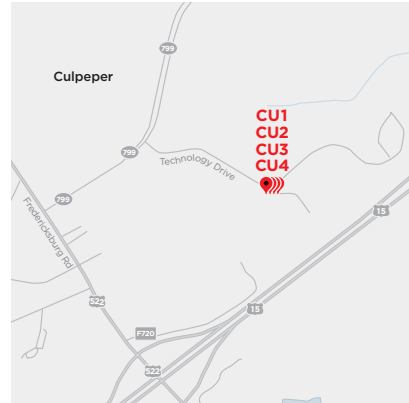


CULPEPER METRO

THE HUB FOR GOVERNMENT AND FEDERAL AGENCIES

Equinix Culpeper data center

Equinix helps companies accelerate business performance by connecting them to their customers, employees and partners inside the world's most interconnected data centers. Our Culpeper, Virginia, International Business Exchange™ (IBX®) data centers are strategically located 60 miles from Washington, D.C. and are business hubs for 125+ customers. These IBX locations are ideal for government agencies looking for state-of-the-art security. These buildings are part of one of the most secure and technologically sophisticated data center facilities in the Eastern U.S.



The Culpeper campus is a key location for federal IT initiatives and the federal cloud market, which is projected to grow at a compound annual growth rate of 21% through 2019. The campus includes four data center buildings, making it a physically redundant facility built for reliability and designed to exceed the needs of government agencies and enterprises in a digital age.

Value by vertical

For network service providers

- A highly secure and reliable, carrier-neutral environment to deploy computing, network, storage and IT infrastructure

For enterprises

- A secure bunker in every IBX designed to provide public-sector clients colocation space that meets government standards
- Easy access to Continuity of Operations (COOP) environments, a federal government initiative to keep agency IT operations running essential functions under a broad range of circumstances

For cloud and IT service providers

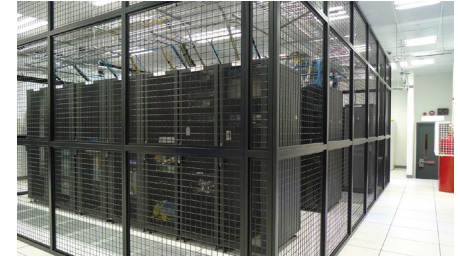
- Ability to connect to 125+ customers, partners, content providers, networks and internet service providers

For content and digital media

- Direct connectivity to leading network operators for reduced latency: CenturyLink, Level 3 Communications, and Verizon

For financial services

- Multi-layered, armed guard security, including a roving perimeter and building security guards

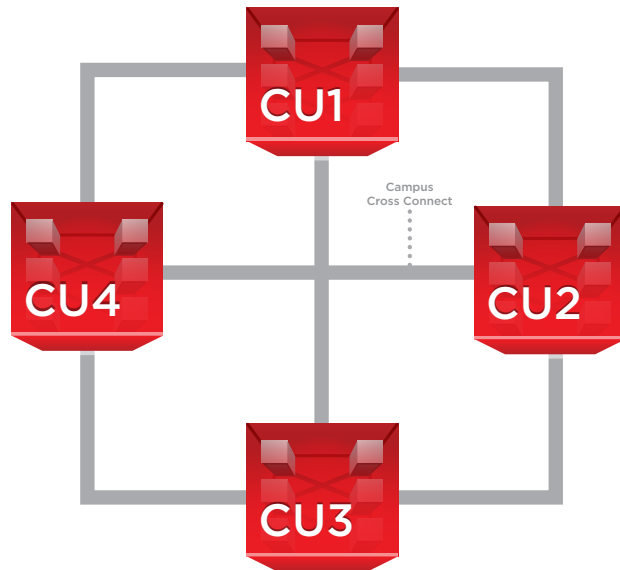


Representative Equinix IBX data center interior



Representative Equinix IBX data center interior

Connectivity options through Equinix



Reasons to believe in us

Global data centers

- 200 data centers, 52 major markets, \$21B+ capital invested in capacity/new markets, global availability 99.9999%+

Connected

- 1,700+ networks, 270,000+ cross connects, less than 10ms latency to 90% of the population of North America, Western Europe, top markets in Asia-Pacific and Brazil

Partners, customers and prospects

- Blue-chip customer base of 9,800+ global businesses across 24 countries, on 5 continents representing network, digital media, financial services, cloud/IT and enterprise leaders

Equinix customer count per vertical



15+
Network



60+
Enterprise



15+
Financial Services



30+
Cloud and IT Services

Contact Us

Phone: +1 800 322 9280

Web: Equinix.com/contact-us/sales